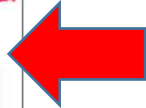
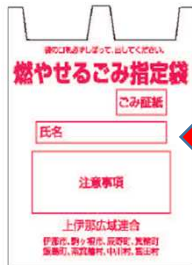


# How to dispose of garbage.

## ① Write your name on the bag



Write here

## ② Separate the garbage into designated bags



## ③ Tie up the bag tightly so that nothing comes out.



## ④ Take the bag to the designated garbage disposal area at the designated time to dispose of the garbage.



# Types of garbage

## Combustible waste



- Paper
- Dirty plastic

## Non-combustible waste



- Metal
- machine

## Plastic waste



- Plastic cleaned of dirt.

## hazardous waste



- Dry cell
- Battery

# Combustible waste

Bring combustible waste by 8am in the morning

Things that can be  
throw away

OK

•Paper、Tissue



•Dirty plastic



Dirty plastic bottle



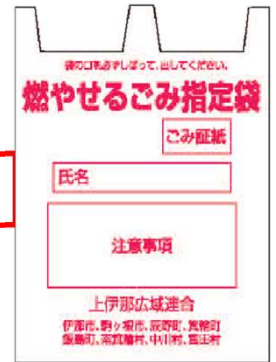
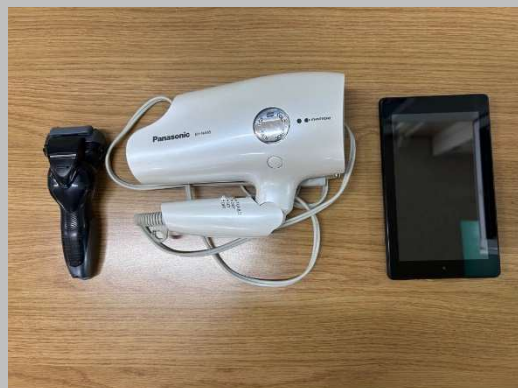
Things that cannot be  
throw away

NG

•Metal



•machine



袋の口をあすしばって、出してください。

**燃やせないごみ指定袋**

ごみ証紙

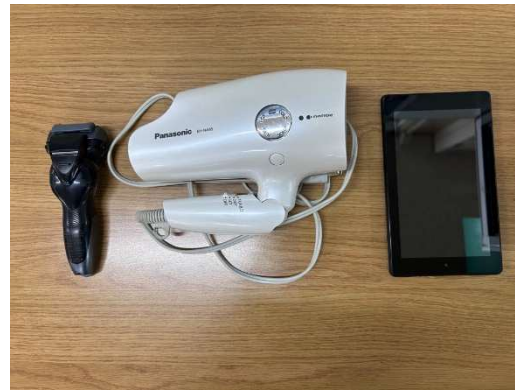
氏名

注意事項

上伊那広域連合  
伊那市、駒川町、辰野町、箕輪町、  
飯島町、南箕輪町、中川村、富田村



A photograph showing a white plastic grater with a handle and a black handle knife resting on it, next to a crushed metal can on a green surface. The can has a label with text and a logo, including the word "Coca-Cola". The grater has a circular handle and a series of holes for grating. The knife has a black handle and a silver blade. The can is crushed and has a label with text and a logo, including the word "Coca-Cola". The background is a green surface.



A photograph showing several pieces of crumpled paper on a dark brown wooden surface. There are three pieces of white paper and two pieces of pink paper, all in various crumpled shapes. The lighting is even, and the wood grain is visible.

A blue plastic bucket with a handle is shown on a white surface. To the right of the bucket is a document with safety instructions, including a warning symbol (a triangle with an exclamation mark) and text in multiple languages. The background is a textured, light-colored wall.



# Plastic waste

Take out the plastic waste by 8 am in the morning.

資源プラスチック用ごみ袋

後口も必ずしぼって、出してください

氏名

注意事項

上伊那広域連合  
伊那市、駒ヶ根市、飯綱町、箕輪町  
飯島町、南箕輪村、中川村、飯田村

Things that can be thrown away ...

• Candy wrapper



Have this mark

• Cup noodle



※Clean it up before throwing it away

Things that cannot be thrown away...

NG

• Dirty plastic



• Paper



• Hard plastic



• Metal



# hazardous waste

**Danger / Caution**



- Dry cell... Dispose of on dry battery Day



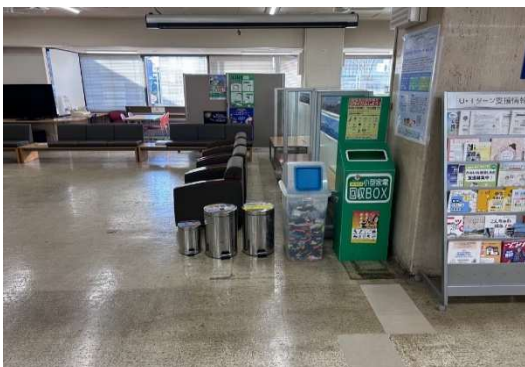
Bring it by  
**8 am** on  
dry cell Day.

- Battery... Dispose of on Battery Day



Bring it from **8 am** to  
**9 am** on the day of  
the battery.

※We also collect batteries, small appliances,  
and electronic devices at the city hall.



Can throw it away  
from **8:30 am** to **5:15**  
pm on weekdays.

# If you have a problem with garbage

**City hall**

**Safe and Secure Living Division**

**Tel.**

**0 2 6 5 – 7 9 – 3 1 5 4**

**Interpret**

(Português, English, Spanish

Other languages are interpreted using a machine)